

EV58IP

IP camera for harsh environments

Data sheet

Version 2.4

Date 2024-09-12



ITEM S.r.l. - P. IVA 06939990013 - Cap Soc 100.000,00 IV - via Chialamberto 4 - Torino

tel: +39 011 2200477 - email: info@item.to.it - www.item.to.it

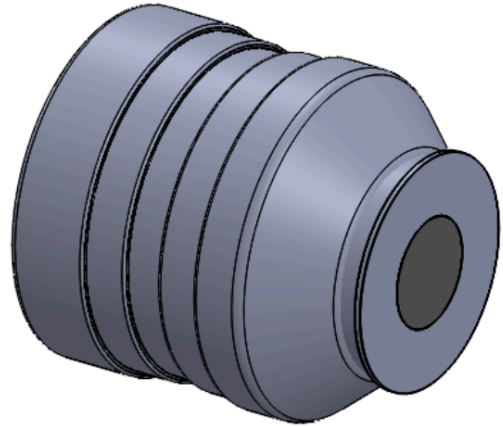
Table of contents

1. Product Description
2. Application scenarios
3. Features
4. Connectors
5. Technical specifications
6. Mounting Brackets

1. Product description

The **EV58IP** is a tropicalized compact IP camera designed for high quality video monitoring in harsh environments applications.

EV58IP features Power over Ethernet and RTSP streaming for real-time applications. It is available in different configurations of optics, connectors and resolution. This model is ECE-R10 certified. These cameras embed a proprietary anti-fog patented technology.



2. Application scenarios

Some typical application scenarios for this product include:

- **Bird's eye view systems:** Overhead surveillance and monitoring applications
- **Industrial automation:** Process monitoring and quality control in manufacturing environments
- **Autonomous driving:** Vehicle perception and navigation systems
- **Harsh environment surveillance:** Outdoor security and monitoring in extreme weather conditions
- **Marine applications:** Waterproof monitoring for maritime installations
- **Agricultural monitoring:** Crop and livestock surveillance in outdoor farming operations

3. Features

EV58IP camera comes with the following features:

- **up to 180° horizontal field of view**
- **IP68 2atm waterproof rating**
- **Sapphire glass lenses** for standard FOV (not available on 180° models)
- **Patented anti-fog technology**
- **Ethernet interface** available in different connector configurations
- **Power over Ethernet** power supply
- **Real-time video streaming** over ethernet

4. Connectors

EV58IP cameras can be manufactured with different connectors, depending on the target application. Most popular ones are:

- **M12 X-key connector**, suitable for outdoor and harsh environments
- **RJ45 connector**, suitable for indoor use

Other connectors or custom solutions can be implemented too.

5. Technical specifications

Parameter	Notes	Value	Unit
Sensor	CMOS technology	1/3	inch.
Resolution	Customizable - up to	2K	resolution
		1440*2560	pixels
Frame rate	Customizable - up to	25	fps
Latency	Max	20	ms
Streaming protocol	optional authentication	RTSP	
	optional	ONVIF	
Encoding format	customizable	H264 / H265	
Bitrate	Customizable - up to	8192	Kbps
Power supply	PoE standard IEEE 802.3	48	Vdc
Operating temperature	Min	-20	°C
	Max	+80	°C
Focal distance		30 - inf.	mm
Horizontal Field of view	Available in different configurations - up to	180	°
White Balance	Auto		
Night vision mode	Auto - down to	0.001	Lux
IP rating		IP68 2 atm	
EMC compatibility	Certified	ECE R10	
Dimensions	Diameter	58	mm
	Depth	67	mm

6. Brackets options

We can provide the camera with different brackets options, suitable for different mounting scenarios.

Ring brackets: made in glass-reinforced Nylon with anchoring screws.

Screw center distance: 20mm

External width: 63mm

Screw: M3 10mm Inox

Metal brackets: made in stainless steel with anchoring screws.

Custom brackets can be designed on request.

bracket height: 86mm

bracket width: 69mm

Central mounting hole: diam. 8mm

Adjustment angle: $\pm 30^\circ$

bracket height: 117mm

bracket width: 69mm

Central mounting hole and guides: diam. 7mm

Mounting guides center distance: 40mm

Adjustment angle: 0-90°

